



# WelcomHeritage

Palaces • Forts • Havelis • Resorts



## WelcomHeritage Judges Court, Pragpur

Dist. Kangra Pragpur Himachal Pradesh - 177107, India

WelcomHeritage Judge's Court provides another dimension of fame to Kangra, that of a heritage property inside Pragpur heritage village. The landmark building was built during the First World War by Justice Sir Jai Lal between the years 1914 and 1918 and is spread over 10 acres of land. The admirable Indo-European architectural scheme, with its modern upgrades, still maintains a pleasantly medieval vibe. One of the best Pragpur Hotels, this is the perfect destination to forget your hectic lifestyle and connect with the soul of a time long gone.

### ACCOMODATION

Total Rooms: 26

Deluxe Rooms: 11

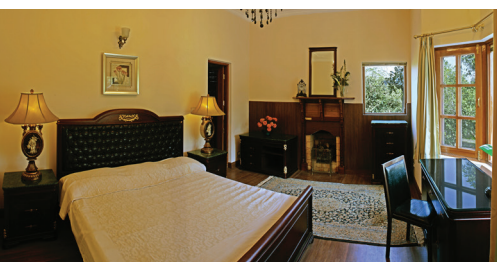
Categories: 02

Suite: 15

### FOOD AND BEVERAGE

**In-House Restaurant** - Serves delicious preparations ranging from Indian, Chinese and Continental.

**The Whiskey Priest** - In-house bar. The perfect spot to unwind and relax with the drink of your choice.



## SERVICES & FACILITIES

Wi-Fi facility	Doctor on Call
LED Television with Satellite connection	Car Parking
Tea/Coffee Maker	

## LEISURE AND RECREATIONS

Plunge Pool	Regional Craft Experience
Yoga Meditation (On request)	Facial/Head Massage/Henna application (On request-chargeable)
Nature Walk	
Organic Milk (On request-chargeable)	

## EXCURSIONS

His Holiness the Dalai Lama's Main Temple - 30 km (approximately 70 mins)
Jawalumukhi ji temple - 46 km (approximately 70 mins)
Bajreshwari temple - 34 km (approximately 70 mins)
Kangra Fort - 18 km (approximately 40 mins)
Norbulingka Monastery - 25 km (approximately 50 mins)
Garli village - 62 km (approximately 90 mins)
Masroor rock cut temple - 18 km (approximately 40 mins)



## HOW TO REACH

✈ Distance from Dharamshala Airport - 65 km
🚆 Distance from Chandigarh Railway Station - 180 km
🚆 Distance from AMB Railway Station - 27 km
📍 Distance from Delhi - 450 km/8 hrs
📍 Distance from Chandigarh - 175 km/4 hrs

<b>LOCATION</b> Dist. Kangra Pragpur Himachal Pradesh - 177107, India	<b>FOR ENQUIRIES</b> <b>Corporate Office Contact</b> Tel: 080-45771900 E-mail: holidays@welcomheritagehotels.in <b>Hotel Contact</b> Tel: +91 1970 245335 / 245035 E-mail: info@judgescourt.com
--	---

www.welcomheritagehotels.in | Follow us on     

Sales offices

Ahmedabad (8980269876) | Mumbai (7291014044) | Jaipur (8107528107)  
Delhi (7291017087) | Nagpur (7291018088) | Punjab (8427883332)